



Wentworth Drive, West Dartford, DA1 3NQ
Guide price £475,000 Freehold

 3  1  2  D

The Homes Group are delighted to present to the market this very well presented & extended semi-detached house in West Dartford ideally situated for Wentworth Primary & a short walk to the sought after Grammar schools & Crayford Station. The home offers good-sized accommodation throughout including a 25' living/dining room & separate sitting room, a modern 18' kitchen with a number of integrated appliances and on the first floor are the three bedrooms & family bathroom. Externally the home benefits from a good-sized garden, block paved driveway and tandem garage.

Entrance Porch

Entrance Hall

Living/Dining Room

25'1" into bay x 9'10" widening to 10'8" (7.65m into bay x 3.00m widening to 3.25m)

Sitting Room

10' x 9'1" (3.05m x 2.77m)

Kitchen

18'8" x 6'5" narrowing to 6'1" (5.69m x 1.96m narrowing to 1.85m)

Landing

Bedroom One

13'11" into bay x 10' (4.24m into bay x 3.05m)

Bedroom Two

11' x 10'5" (3.35m x 3.18m)

Bedroom Three

8'10" x 6'5" (2.69m x 1.96m)

Bathroom

7'9" x 6' (2.36m x 1.83m)

Garage

22'9" x 8' (6.93m x 2.44m)

Garden

Driveway

Tenure - Freehold

Council Tax - Band D





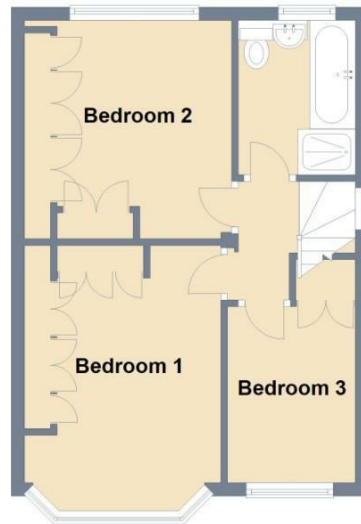
Ground Floor

Approx. 54.0 sq. metres (581.7 sq. feet)

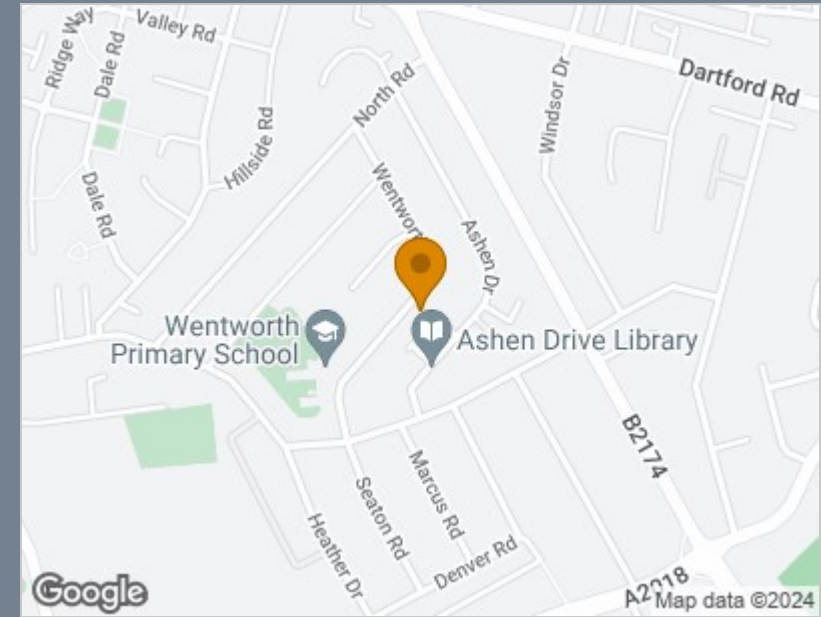


First Floor

Approx. 36.4 sq. metres (391.5 sq. feet)



Total area: approx. 90.4 sq. metres (973.2 sq. feet)



Energy Efficiency Rating		Current	Potential
Very energy efficient - lower running costs			
(92 plus) A			
(81-91) B			85
(69-80) C			
(55-68) D		55	
(39-54) E			
(21-38) F			
(1-20) G			
Not energy efficient - higher running costs			
England & Wales		EU Directive 2002/91/EC	

Viewing

Please contact The Homes Group Office on 01322 875000 if you wish to arrange a viewing appointment for this property or require further information.

These particulars, whilst believed to be accurate are set out as a general outline only for guidance and do not constitute any part of an offer or contract. Intending purchasers should not rely on them as statements of representation of fact, but must satisfy themselves by inspection or otherwise as to their accuracy. No person in this firm's employment has the authority to make or give any representation or warranty in respect of the property.